

TECH
4
SOCIETY



Pittsburghers for
Public Transit

MOBILITY FOR WHO?

Rebuilding Bridges to Transportation Justice

Feb 2022 Report Release

TECH i4 SOCIETY


cmutech4society.gitlab.io



**COALITION AGAINST
PREDICTIVE POLICING
PITTSBURGH**


**VIRTUAL
TEACH-IN**

COVERING PREDICTIVE POLICING & NEXT STEPS TO AVOID
COVERT, HARMFUL TECHNOLOGY PROJECTS IN PITTSBURGH



**JULY 16, 2020
7:00 - 8:30 PM**

FACEBOOK EVENT: [HTTPS://TINYURL.COM/CAPPTeachin](https://tinyurl.com/cappteachin)
ZOOM LINK: [HTTPS://TINYURL.COM/CAPPZOOM](https://tinyurl.com/cappzoom)



CAPP PGH

Bonnie Fan (they them) is a monkey dancing in the halls of CMU and **T4S community liaison**. They channel institutional complicity into work with PPT, Coalition Against Predictive Policing Pittsburgh, and coveillance



micah epstein (they/them) is a designer, storyteller, systems meddler and **Master's in City Planning student in Housing, Community, and Economic Development**. They've designed for the ACLU of Washington, MIT Media Lab, the coveillance collective, and many others.

Rahul Amruthapuri holds a **Doctor of Public Health from the University of Pittsburgh** and co-authored "Wait, Who's Driving This Thing?" a lit review & position paper on driverless vehicles



Ben Eisner is a **Ph.D. student in the Robotics Institute at Carnegie Mellon University**, working on autonomous household robotics. He researches urban mobility at Tech4Society



emily howe is a **researcher and educator in the sociopolitics of education**. emily is passionate about collective work redressing past social harms, working with PPT, City of Bridges Community Land Trust, and Lawrenceville United.



Pittsburghers For Public Transit



Bus Lines Are Life Lines

**Laura Chu
Wiens** is the
**Executive
Director of PPT**

and believes in
the collective
power of people
to transform their
communities.



Crystal Jennings is a housing
justice advocate, working with
the **City of Bridges
Community Land Trust as the
Stewardship & Community
Engagement Manager**. Among
many efforts, she worked
tirelessly to mobilize displaced
residents with the Penn Plaza
Support and Action Coalition.



Paul O'Hanlon has
been a longtime
advocate for disability
issues and low
income housing and
is a **co-chair of the
City-County Task
Force on Disabilities**.



Teaira Collins is a
PPT Member, and
**Leader of the
93-Hazelwood
Campaign**, fighting
for access for
herself, her
children, and her
neighbors



Core infrastructure and access needs the city hasn't been prioritizing

Paul O'Hanlon has been a longtime advocate for disability issues and low income housing and is a **co-chair of the City-County Task Force on Disabilities.**



Rahul Amruthapuri holds a **Doctor of Public Health from the University of Pittsburgh** and co-authored "Wait, Who's Driving This Thing?" a lit review & position paper on driverless vehicles

The current bus rapid transit (BRT) plan puts all the parking on the wrong side for people with disabilities.

Oakland has parking on the right side



Uptown currently has parking on the right side





Disability-unfriendly street design



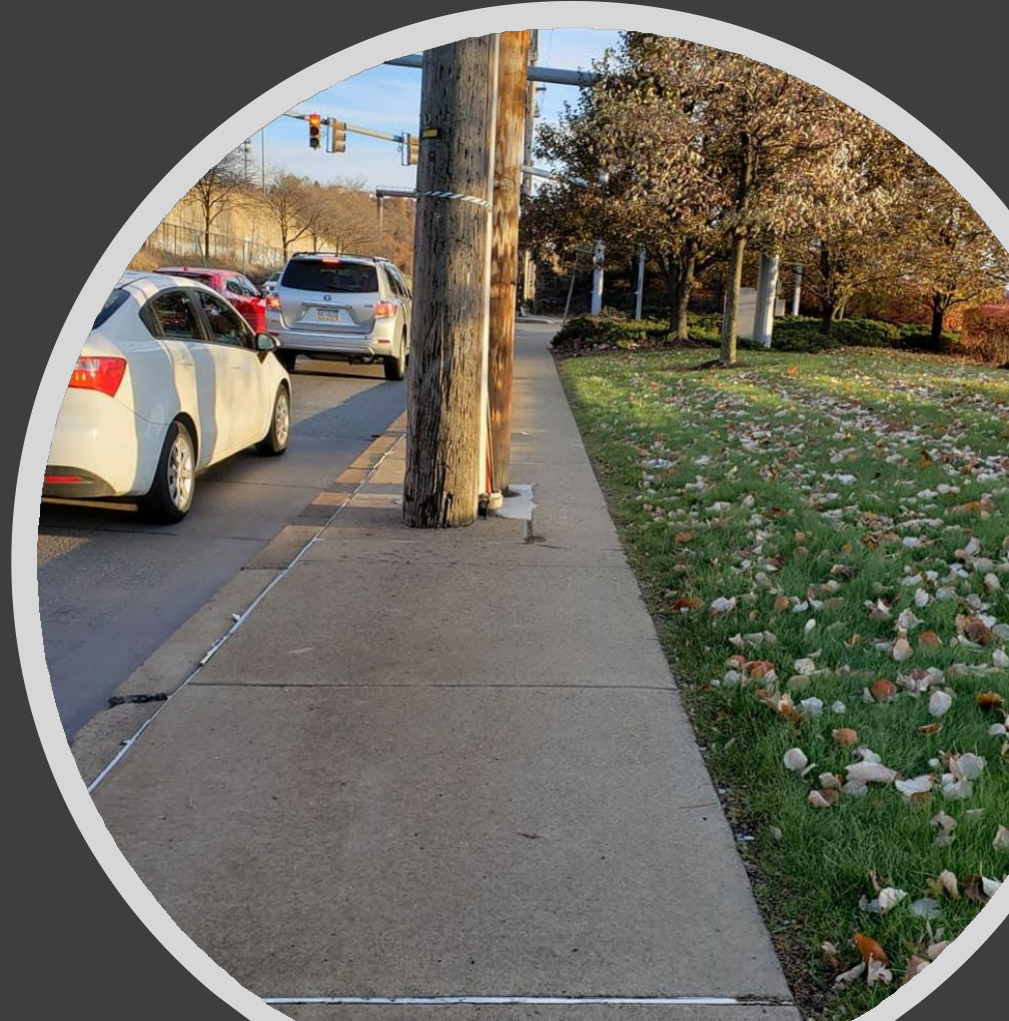
We have
some
unavoidable
infrastructure
problems



Street clearing
of snow is
done with
extreme
indifference to
access



Many of our
barriers are
avoidable
Ignorance or
indifference?





Obstacle
after
obstacle

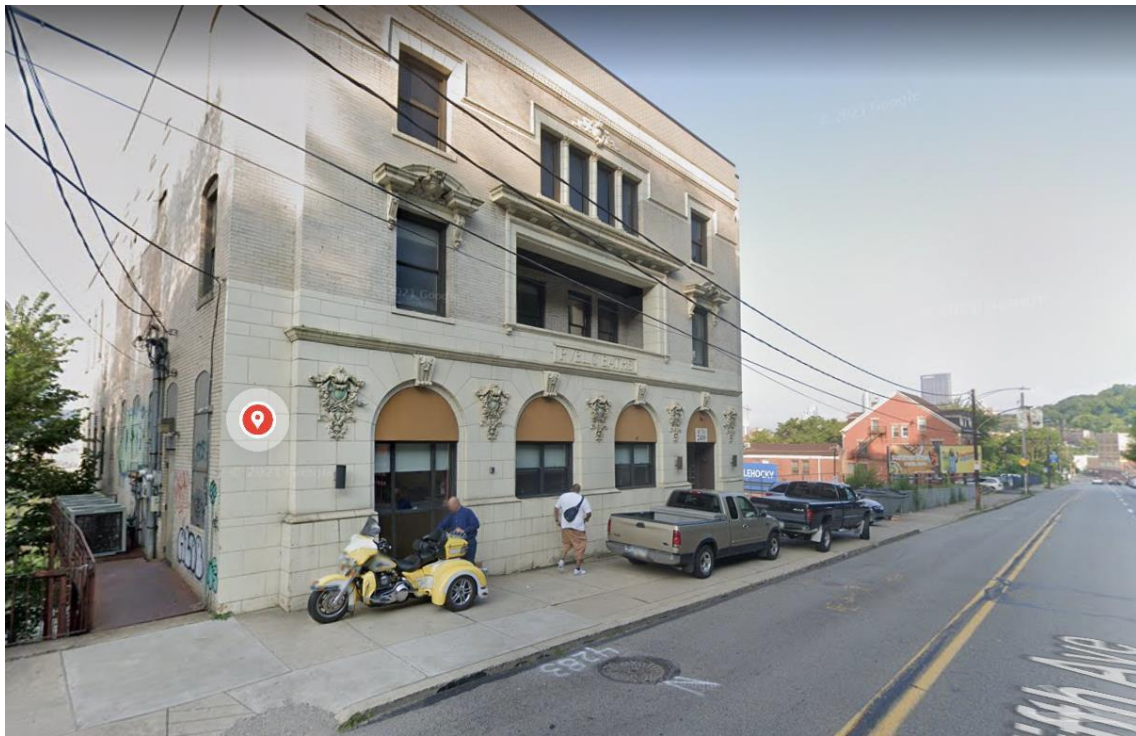
Sidewalks are
used for road
signs or
storage



Pedestrian
right-of-way
or
privatized
public
space?



Sidewalk
or
parking lot?





Pittsburgh lacks the infrastructure
to manage the obstacles it is
permitting

“Between 2017 and 2022, the proportion of capital budget allocated to **ramp and public sidewalks** ranged **between 0.21 percent and 1.45 percent.**”

quote
from
report

Data is sourced from the Western Pennsylvania Regional Data Center and represents 311 calls between 4/20/2015 and 12/6/2021

Average number of sidewalk related 311 calls/sidewalk mile/year by neighborhood

0 - 1
1 - 2
2 - 3
3 - 4.5



figure
from
report

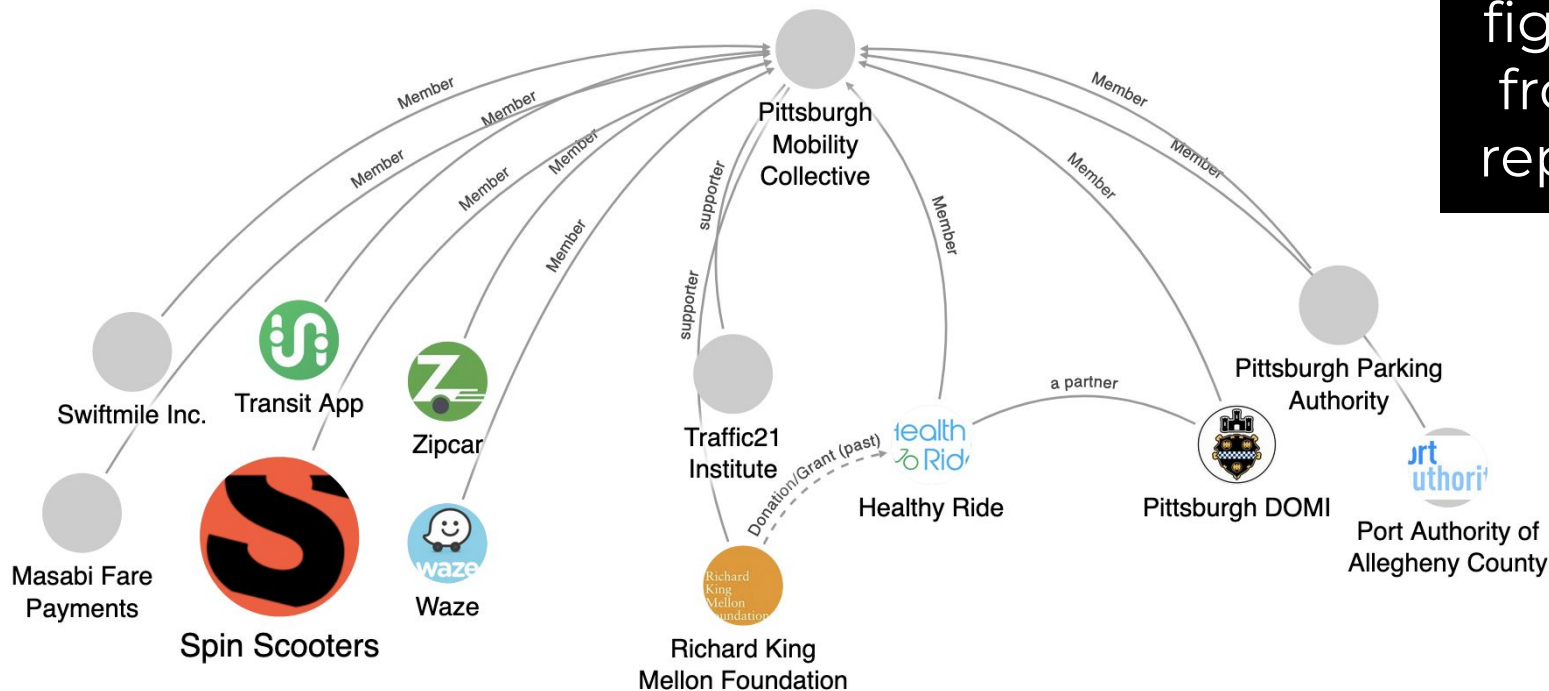
Community voices left out: Does MovePGH & private tech provide “Universal Basic Mobility?”

Paul O'Hanlon has been a longtime advocate for disability issues and low income housing and is a **co-chair of the City-County Task Force on Disabilities.**



Ben Eisner is a **Ph.D. student in the Robotics Institute at Carnegie Mellon University**, working on autonomous household robotics. He researches urban mobility at Tech4Society

figure
from
report



For-Profit Companies

(Spin seems to be the member taking the lead most of the time.)

Non-Profits

Government Agencies

The Americans with Disabilities Act requires that services, programs and activities when viewed in their entirety *must be readily accessible to, and usable by persons with disabilities.*

Less
accessible
+
a sidewalk
obstacle



Readily
accessible
to, and
usable by
persons
with
disabilities
?



“CMU’s University Health Services reported **3 incidents per day on or near campus requiring significant medical treatment** during the summer and fall, including emergency room visits and, in some cases, requiring reconstructive surgery.”

figure
from
report

1 mile trip:

Spin Scooter:	\$4.82
Healthy Ride:	\$0.63
Transit ride:	\$2.50
Scoobi:	\$3.68

quote
from
report

Mon-Oakland Connector: Private Shuttles vs. Real Resident Needs



Teaira Collins is a PPT Member, and **Leader of the 93-Hazelwood Campaign**, fighting for access for herself, her children, and her neighbors

“This shuttle primarily benefited the universities...
and siphoned \$24M in public funding...

Most importantly, this project received capital funding while **important sidewalk infrastructure repairs lay unfunded and neglected.**

In addition, important **public transit options could have provided better, cheaper, and more accessible transportation access** to the area...

The 93 provided access to grocery stores when the neighborhood has none.”

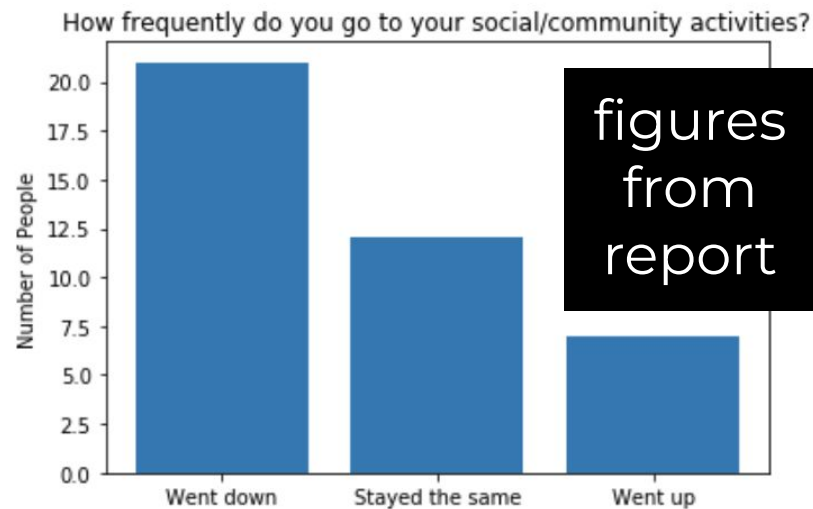
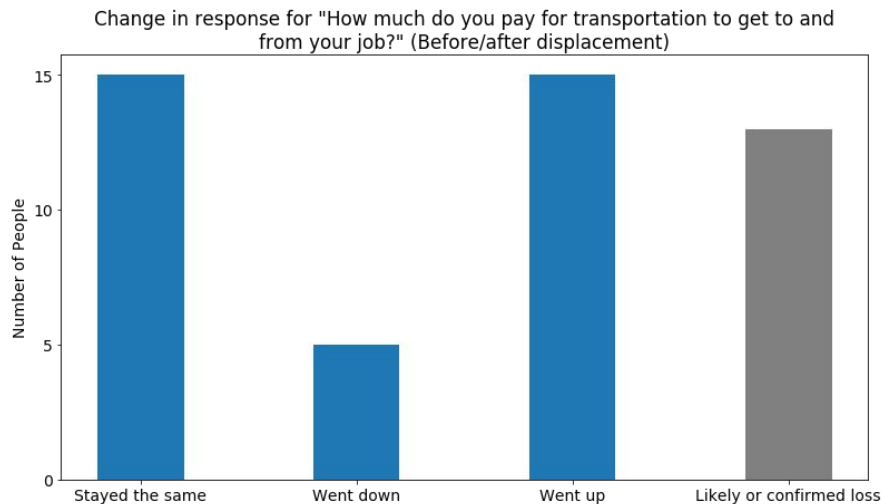
quote
from
report

Gentrification and displacement to transit poor areas

Understanding the crucial connection between housing justice to mobility justice



Crystal Jennings is a housing justice advocate, working with the **City of Bridges Community Land Trust** as the **Stewardship & Community Engagement Manager**. Among many efforts, she worked tirelessly to mobilize displaced residents with the Penn Plaza Support and Action Coalition.



“This meant that not only did displaced residents **face higher costs of access to economic opportunities and essential trips** like health and groceries, **they were also forced to forgo social trips**, increasingly isolated from friends and community.”

quote
from
report

Calling for a shift: A city that prioritizes people over profit

What would mobility for all look like compared to now?
How can we shift priorities of the city to the needs of its residents?

emily howe is a **researcher and educator in the sociopolitics of education.**

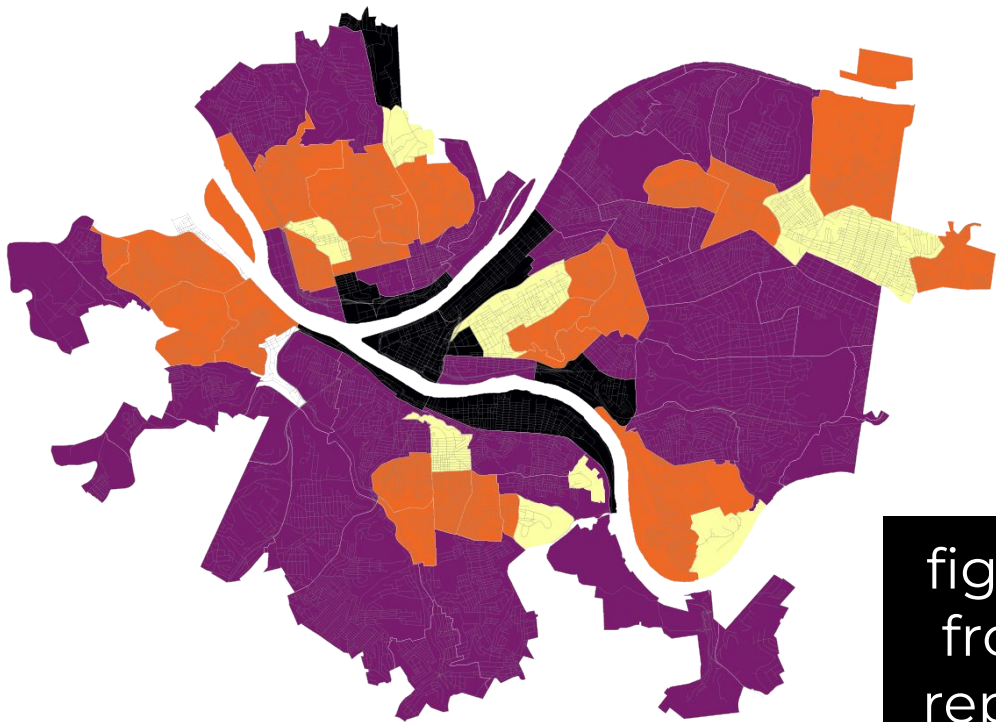
emily is passionate about collective work redressing past social harms, working with PPT, City of Bridges Community Land Trust, and Lawrenceville United.



micah (they/them) is a designer, storyteller, systems meddler and **Master's in City Planning student in Housing, Community, and Economic Development.** They've designed for the ACLU of Washington, MIT Media Lab, the coveillance collective, and many others.

PAAC EQUITY INDEX

- 2016 & 2018 data (does not account for Covid-19)
- Broad social index including disabilities, single mothers, and vehicle access
- High-need neighborhoods include (yellow):
 - Bedford Dwellings
 - Larimer
 - Glen Hazel
 - California-Kirkbride
 - Allentown



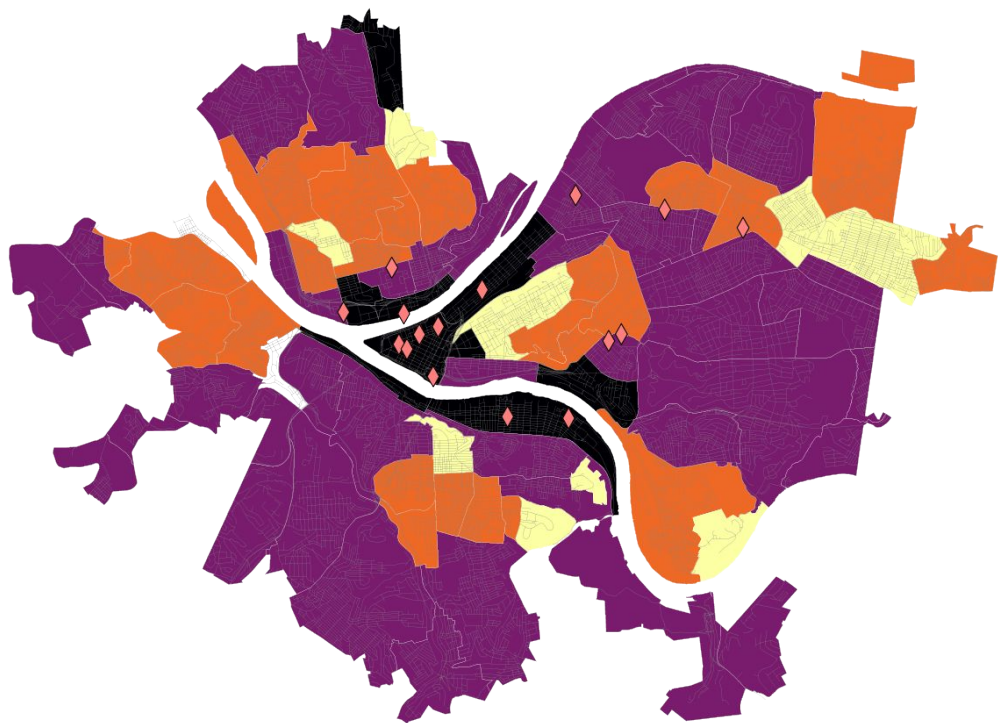
Mobility Need as Defined by PAAC Equity Index by Neighborhood

Low need Moderate need High need Very high need



MOVEPGH MOBILITY HUB PLACEMENT

- :(
- Poor open data practices



Mobility Need as Defined by PAAC Equity Index by Neighborhood

Low need Moderate need High need Very high need

Move PGH Mobility Hub



figure
from
report

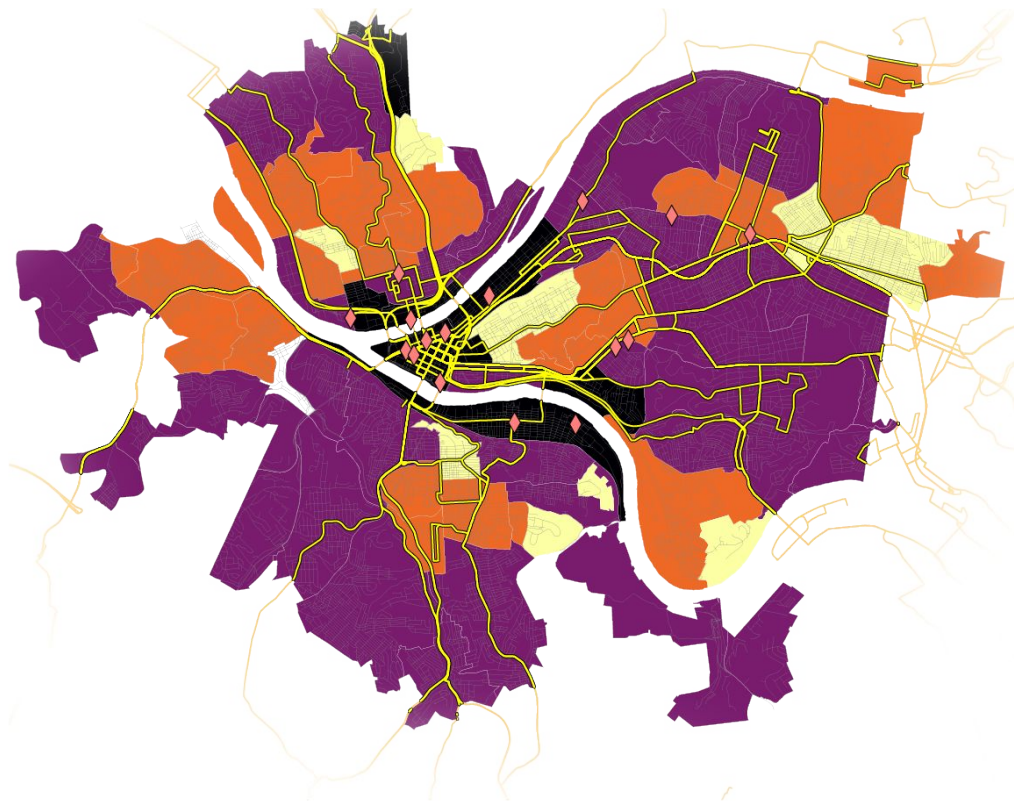
MOBILITY HUBS & TRANSIT

- “These services are additional options where public transportation isn’t as widely available as needed.”

vs.

- Last-mile solution near existing transit density





Mobility Need as Defined by PAAC Equity Index by Neighborhood

Low need Moderate need High need Very high need

Rapid, Express, and Key Corridor Transit Routes



MOBILITY IS A HUMAN RIGHT!

- Transit is the primary source of mobility for many
- Mobility hubs *may* be a last-mile solution - but for whom?

figure
from
report

Sign on to the 100 Days
Platform!
tinyurl.com/ppt100days

Pittsburgh 100 Days Transit Platform

Affording All Residents the Freedom to Move



**Pittsburghers for
Public Transit**

